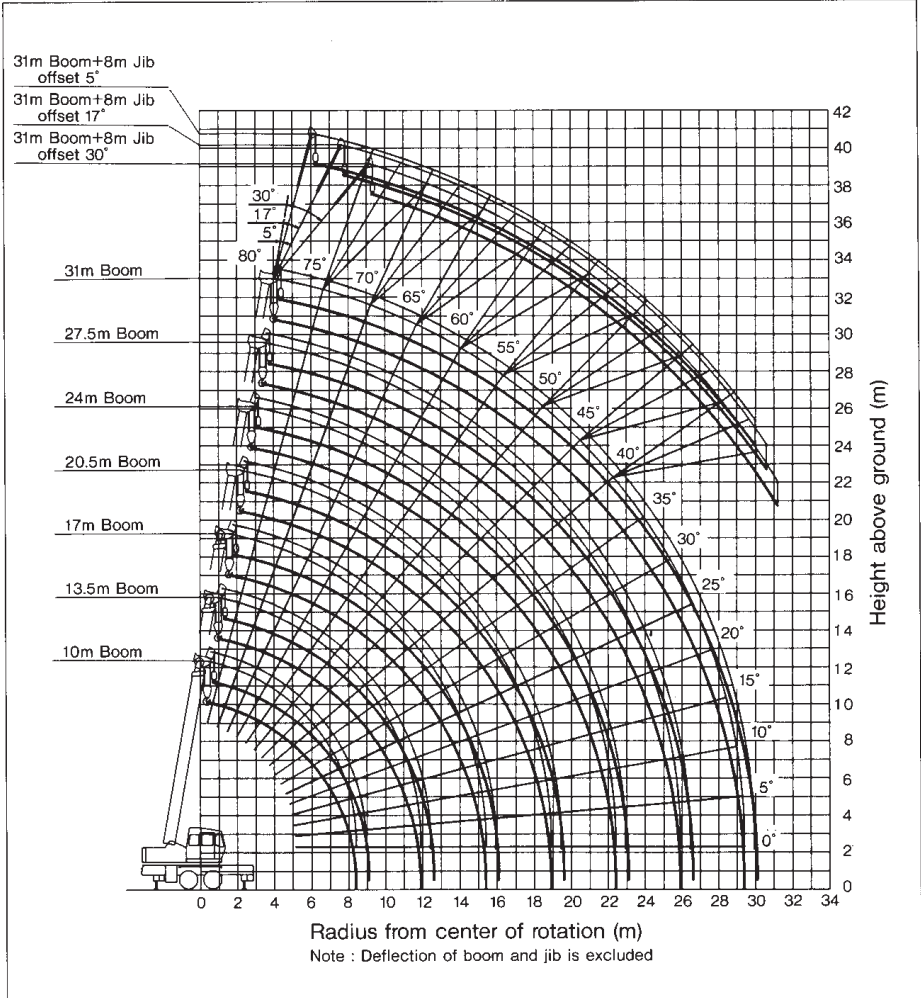


WORKING RANGE





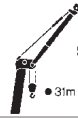
● 10m-31m Boom



● 31m Boom + 8m Jib
(Offset 5')



● 31m Boom + 8m Jib
(Offset 17')



● 31m Boom + 8m Jib
(Offset 30')

RATED LIFTING CAPACITY

Based on BS 1757 : 1986
DIN 15019-2
75% of tipping loads

Outriggers fully extended with front jack — 360° full range								Outriggers fully extended without front jack Outriggers intermediately extended — 360° full range							
Working radius(m)	10 m Boom	13.5 m Boom	17 m Boom	20.5 m Boom	24 m Boom	27.5 m Boom	31 m Boom	Working radius(m)	10 m Boom	13.5 m Boom	17 m Boom	20.5 m Boom	24 m Boom	27.5 m Boom	31 m Boom
2.5	25.00	17.50	14.50					2.5	20.00	17.50	14.50				
3.0	25.00	17.50	14.50	9.50				3.0	20.00	17.50	14.50	9.50			
3.5	20.60	17.50	14.50	9.50	7.50			3.5	20.00	17.50	14.50	9.50	7.50		
4.0	18.00	17.50	14.50	9.50	7.50	6.50		4.0	16.50	17.50	14.50	9.50	7.50	6.50	
4.5	16.30	15.80	14.50	9.50	7.50	6.50		4.3	14.40	14.85	14.50	9.50	7.50	6.50	
5.0	14.85	14.40	13.25	9.50	7.50	6.50	6.00	5.0	10.50	10.50	10.20	9.50	7.50	6.50	6.00
5.5	13.65	13.25	12.20	9.50	7.50	6.50	6.00	5.7	7.90	7.80	7.50	7.40	7.50	6.50	6.00
6.0	12.30	12.20	11.30	9.50	7.50	6.50	6.00	6.0	7.10	7.00	6.80	6.80	7.00	6.50	6.00
6.5	11.20	11.00	10.50	9.50	7.50	6.50	6.00	6.5	6.00	5.90	5.55	5.55	6.15	6.50	6.00
7.0	10.25	10.00	9.80	8.90	7.50	6.50	6.00	6.6	5.85	5.70	5.45	5.70	6.00	6.30	6.00
7.5	9.40	9.20	9.10	8.35	7.50	6.50	6.00	7.0	5.20	5.00	4.80	5.10	5.35	5.60	5.50
8.0	8.65	8.45	8.35	7.90	7.05	6.20	5.65	8.3	3.80	3.40	3.20	3.50	3.85	4.00	4.10
8.3	8.25	8.05	7.95	7.55	6.85	6.05	5.45	9.0	2.80	2.65	3.00	3.25	3.40	3.50	
9.0		7.20	7.10	7.00	6.35	5.60	5.05	10.0	2.10	1.95	2.50	2.55	2.75	2.80	
9.5		6.65	6.55	6.65	6.05	5.35	4.80	11.0	1.50	1.35	1.75	2.00	2.00	2.20	2.20
10.0		6.20	6.10	6.40	5.75	5.10	4.60	11.8	1.15	1.06	1.40	1.65	1.85	1.85	1.90
11.0		5.20	5.05	5.40	5.20	4.65	4.20	13.0		0.65	0.95	1.20	1.35	1.50	1.50
11.6		4.45	4.40	4.75	4.80	4.35	3.95	13.5		0.50	0.50	1.05	1.20	1.30	
12.0			4.25	4.60	4.70	4.30	3.90	14.5			0.50	0.80	0.90	1.05	
14.0			3.05	3.40	3.55	3.65	3.35	15.0				0.70	0.80	0.90	
15.3			2.40	2.80	2.95	3.10	3.00	16.0				0.45	0.55	0.70	
16.0				2.50	2.70	2.85	2.85	16.5					0.45	0.60	0.60
18.0				1.85	2.05	2.20	2.30	17.5						0.40	
18.8				1.60	1.85	1.95	2.10								
20.0					1.55	1.70	1.80								
22.0					1.15	1.30	1.40								
22.3						1.10	1.25	1.35							
24.0							1.10	1.10							
25.8							0.75	0.85							
28.0								0.60							
29.3								0.50							
Standard hook	for 25 ton							Standard hook	for 25 ton						
Hook weight	280 kg							Hook weight	280 kg						
Parts of line	8							Parts of line	8						
Critical boom angle	—							Critical boom angle	20' 35' 42' 48' 52'						

(Unit: Metric ton)

(Unit: Metric ton)

Outriggers fully extended with front jack — 360° full range						
Boom angle (°)	31 m Boom + 8 m Jib					
	Offset 5'		Offset 17'		Offset 30'	
	Working radius(m)	Load (t)	Working radius(m)	Load (t)	Working radius(m)	Load (t)
80.0	7.7	2.75	9.1	1.95	10.4	1.35
76.0	10.1	2.75	11.5	1.95	12.7	1.35
75.0	10.5	2.75	12.1	1.88	13.5	1.35
70.0	14.0	2.15	15.2	1.60	16.4	1.18
65.0	17.2	1.78	18.2	1.35	19.3	1.04
60.0	20.2	1.52	21.2	1.18	22.1	0.92
53.0	23.8	1.28	24.8	1.00	25.7	0.80
50.0	25.4	1.00	26.3	0.95	26.9	0.76
48.0	26.3	0.85	27.2	0.82	28.0	0.72
44.0	28.1	0.65	28.9	0.62	29.4	0.60
39.5	30.0	0.48	30.6	0.45	31.2	0.45
Standard hook	for 3 ton					
Hook weight	60 kg					
Parts of line	1					
Critical boom angle	35'					

(Unit: Metric ton)

Outriggers fully extended without front jack Outriggers intermediately extended — 360° full range						
Boom angle (°)	31 m Boom + 8 m Jib					
	Offset 5'		Offset 17'		Offset 30'	
	Working radius(m)	Load (t)	Working radius(m)	Load (t)	Working radius(m)	Load (t)
80.0	7.7	2.75	9.1	1.95	10.4	1.35
76.0	10.1	2.75	11.5	1.95	12.7	1.35
75.0	10.5	2.75	12.1	1.88	13.5	1.35
72.0	12.5	1.90	14.0	1.60	15.0	1.25
69.0	14.3	1.35	15.6	1.20	16.7	1.07
65.0	16.7	0.80	18.0	0.70	19.0	0.65
60.5	19.1	0.35	20.3	0.32	21.5	0.30
Standard hook	for 3 ton					
Hook weight	60 kg					
Parts of line	1					
Critical boom angle	59'					

(Unit: Metric ton)